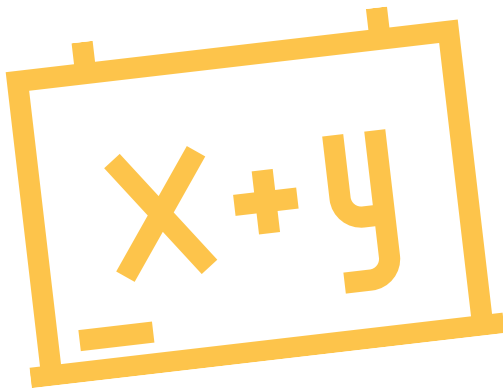




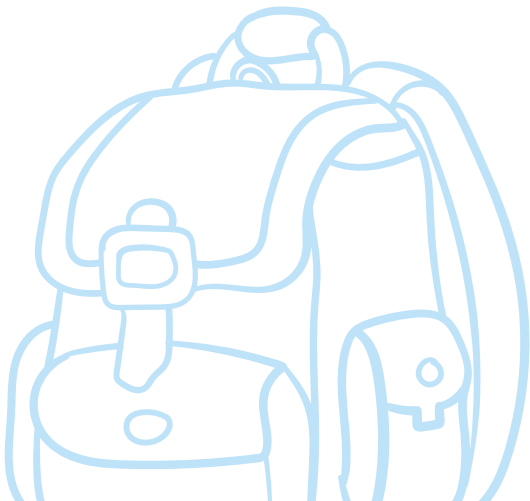
St. Jude  
OF THE LAKE  
CATHOLIC SCHOOL

# MIDDLE SCHOOL DECISION MATRIX

## 101



MORE THAN  
SOLVING FOR **X**  
BE SURE TO FIND  
YOUR **WHY**





St. Jude  
OF THE LAKE  
CATHOLIC SCHOOL

TOP  
4

QUESTIONS TO  
ASK: WHAT GETS  
STUDENTS  
READY FOR  
HIGH SCHOOL



## Is Bigger Always Better?

Kids just grow up so fast; there is no need to speed the process. A bigger student body size means a lower student-teacher ratio and less individualized one-on-one time. **There is a window of opportunity to be a leader in Middle School versus skipping over leadership opportunities just to be a follower.** A larger middle school means less parent involvement during a time when parental guidance is highly needed; the high school-like setting of today's middle schools mean parents are left with a more hands-off environment.

## Do the effects of peer pressure cramp the ability to be your own person?

These days peer pressure is rearing its ugly head at earlier ages, especially in Middle School. Students feel stressed because they fear being seen doing a kind act or talking with "unpopular" classmates because of the fear of being laughed at or judged. **At St. Jude of the Lake Catholic School the culture of kindness and charity runs deep; students here live out love for all others without fear and without hesitation, all while building life-long friendships.**

## Does the school help build a foundation of self-confidence and self-advocacy?

Does your student have a voice? **Before entering high school, students should develop a level of comfortability with one's self and identity as a child of God.** Is the student building skills to approach teachers and administration for help? Does the student have an ability to take charge of one's own academic experience and extra-curricular activities? The answer to both of these is yes at St. Jude of the Lake Middle School in a time and age-appropriate manner.

## Do our academics promote high school readiness?

Our academics are very competitive at St. Jude Middle School, just as good as elsewhere or better, **BUT, don't lose sight of the necessities of character, relationship, and faith-building in the age-appropriate, safe and nurturing environment of their middle school years.**

## It's time to find your WHY

Something to think about: History has demonstrated that our kids do well wherever they land after 8th Grade graduation. Freshman year is a transition for everyone regardless. **We have full confidence that they will be able to navigate, the building, make friends, and open their locker within just days.** More importantly, each St. Jude grad will be a faithful believer, an effective communicator, a reflective and creative thinker, a self-directed, responsible, life-long learner, and a collaborative, responsible family member and citizen.





## MIDDLE SCHOOL

MORE THAN  
SOLVING FOR X  
BE SURE TO FIND  
YOUR WHY

### Size

**We've Got This!** Our middle school wraps directly around each student in a faith-filled, age-appropriate influential environment, **building self-advocacy, self-confidence, and character so they are ready to pave their own way for a successful academic journey well beyond high school.**

### Leadership

**We've got this!** More than joining extracurriculars, students at St. Jude are learning to reach their full potential. **Small class size naturally provides more leadership opportunities, bringing confidence to take on future challenges!** This is the difference between leading and following that is nurtured during the middle school years.

### Academics

**We've Got This:** Although we have **rigorous academics**, there is more to successful preparation for high school. **Middle school academics don't determine future earning potential, but a successful middle school experience does contribute to a student's overall character formation.** Middle school students need to feel safe and nurtured in order to be fully-ready to meet the academic and social rigors of their freshman year.

### Building

**We've Got This:** Navigating a building and locker are mastered within days. **The skills for navigating high school are not built with bells and whistles, but are mastered with personalized attention.**

**We're coaching toward student-autonomy during a time when the power and sway of peers can be a strong pull the other direction.**

### Extras

**We've Got This:** Whether its through doing their own laundry, managing their own snack schedule, or stopping to chat with a favorite staff member, **the opportunities to build strong foundations and relationships gained here set up our students for solid success in their future high school career.**



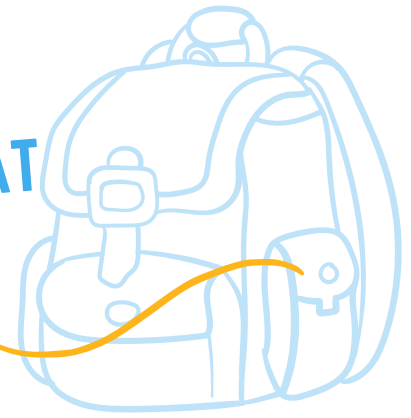
# YOUR



**St. Jude**  
OF THE LAKE  
CATHOLIC SCHOOL

# 5

## FYI'S ON WHAT WE'RE DOING AND WHY



### Leadership

Bringing Confidence

- Student Government
- Buddy Days
- LINKS
- School Store Management
- Class Trips
- Middle School House/Teams
- Mass service opportunities
- Charitable Service opportunities

### Building

- Dedicated Middle School learning spaces
- Individual lockers and Gym Uniforms
- Common Space for community sharing
- Middle School House System
- Innovative technology and hands-on learning (robotics, coding, and more!)

### Class/School Size

- Academic Achievement
- More individualized student support
- Ability to do out-of-the-box opportunities
- Relationship & social skills
- Self-advocacy skills & connecting with teachers and administration
- Intentional Leadership Formation versus being swept away in the high school current

### Extras

- Growing and maturing at an age-appropriate rate
- Middle School Hangout Nights
- Religious & Faith-Building Retreats
- Clubs, Sports, Activities, Art, STEM Lego Robotics, Shine-On Talent & STEM Showcases, Honors Choir, Band & Orchestra, School Theater, Career Day, LINKS, tutoring & student support
- Life Skills (Laundry, cooking, organizing, teamwork)

### Academics

- Academically competitive programs that appropriately challenge each student to their academic abilities
- Student support, tutoring, and life skill coaching
- Building foundations of study-skills, time-management, and teacher-student relationships in an age-appropriate environment
- State-of-the-art technology integrated throughout the curriculum
- National Junior Honor Society
- Overnight Class Trip for each grade each year

